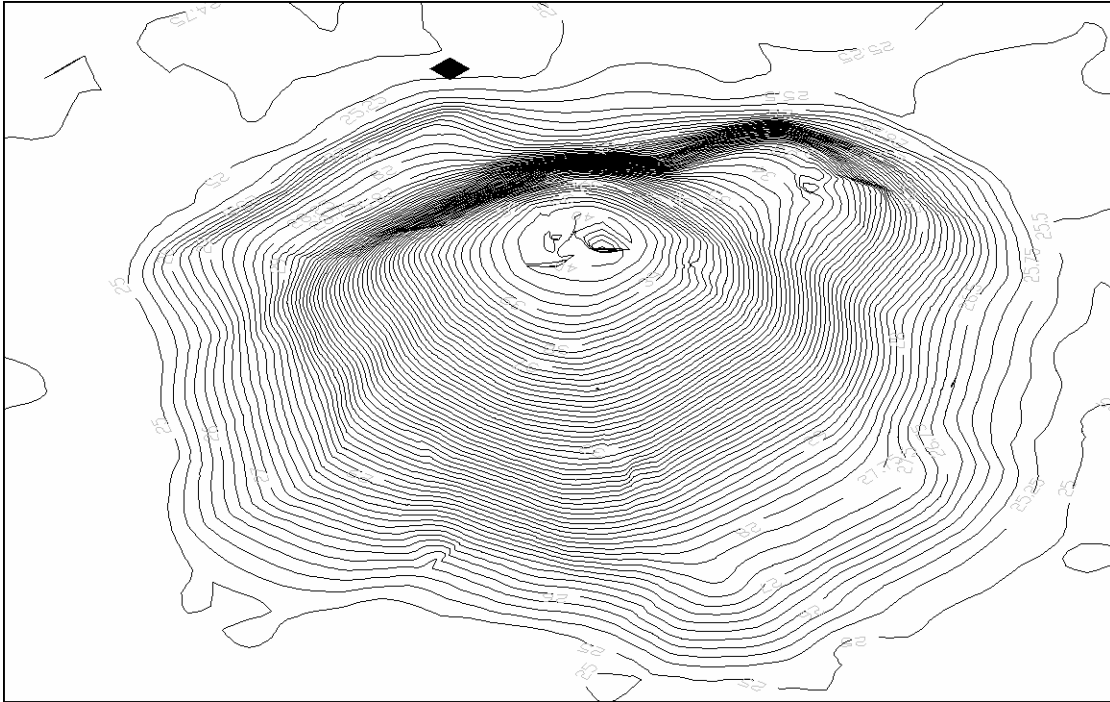


**Florida State University Archaeological Field School at Letchworth  
Mounds, Summer B 2004 (May 12-June 20, 2004)**



**CURRICULUM**

Revised 11 May 2004

Ryan Wheeler, Ph.D.  
Chief, Bureau of Archaeological Research  
Florida Division of Historical Resources  
500 South Bronough Street  
Tallahassee, FL 32399-0250  
Phone: 850 245 6444  
FAX: 850 245 6436  
E-mail: [rwheeler@nettally.com](mailto:rwheeler@nettally.com)

## **Florida State University Archaeological Field School at Letchworth Mounds, Summer B 2004 (May 12-June 20, 2004)**

### **FIELDSCHOOL CURRICULUM**

Students participating in the FSU Field School at Letchworth Mounds will receive weekly assignments that will require them to draw on knowledge gained from their field experience. Some of these will be written exercises that challenge students to think about what they have observed in the field, while others will require students to prepare site sketch maps and complete site file forms—tasks regularly required by Archeological Technicians and Staff Archeologists employed by private firms and government agencies. Field school staff also will develop a reading list that emphasizes methodological and theoretical aspects of fieldwork and details of the regional culture history. Each student will have access to the reading materials, many of which will be needed in completing the weekly assignments. Some days also will be spent on tours of other significant sites in the area. The field school participants also will attend lectures by field school staff and guest speakers.

Students should plan to attend all lectures and field work days in order to receive full credit. Students should be at the Letchworth Mounds site and ready to work by 8:30am; field work will end at 4:00pm daily. A van shuttle from the FSU Anthropology Department will be available for commuting.

**Weekly Assignments:** Weekly assignments should be completed and handed in on the Monday following assignment (e.g., a project assigned on Monday, May 17 should be turned in on Monday, May 24).

**Final Project:** *Interpretation and research.* Students will write a short paper (5 to 6 pages) comparing Letchworth Mounds to other sites visited during the field school and develop plans for future work at the site. Students should plan to use their fieldnotes, completed forms, and other data generated during the project. The Final Project is due at the end of the field school (Friday, June 18).

**Required textbook:** *Field Methods in Archaeology*, by Thomas Hester, Harry Shafer, and Kenneth L. Feder, Paperback, McGraw-Hill, 1997, ISBN# 1559347996 (field school participants should order this book online: <http://www.amazon.com/exec/obidos/ASIN/1559347996/ref%3Dnosim/bookfindercom0e/102-3889220-8555334>)

**Readings:** these are listed under the date by which they are to be read. Further readings may be assigned throughout the semester.

## WEEK ONE (May 12-14)

### 9:00am-4:00pm, Wednesday, May 12 (at FSU Dept. of Anthropology)

Each lecture will be given by the field school director or one of the field school instructors, as appropriate:

- Introduction to Letchworth Mounds site (lecture by Dr. Wheeler)
- Department of Environmental Protection Lecture (Steve Martin)
- Introduction to Regional Prehistory (lecture by Matt Keith)
- Regional Artifact Types—Ceramics (lecture by Louis Tesar)
- Field and lab safety (lecture by Jim Eberwine)
- Introduction to site survey and recording (lecture by Jim Eberwine)
- Goals of public archaeology and legislation (lecture by Amanda Evans)

### 9:00am-4:00pm, Thursday, May 13 (at FSU Dept. of Anthropology)

Each lecture will be given by the field school director or one of the field school instructors, as appropriate:

- Introduction to specialized analysis: radiocarbon dating, paleobotany, zooarchaeology (lecture by Bryan Harrell)
- Plan for magnetometer testing and shovel testing (lecture by Bryan Harrell)
- Introduction to archaeological excavation techniques (lecture by Dr. Wheeler)
- Field work logistics: managing people and data in the field and lab (lecture by Dr. Wheeler)
- Regional Artifact Types—Lithics (lecture by Louis Tesar)
- Review of field school curriculum, including daily field notes to be completed by each student (Dr. Wheeler)
- Artifact labeling and accession systems, and artifact conservation and curation (lecture by Dr. Dave Dickel)

**Reading:** Tesar, et al. 2003, *Results of the Letchworth Mounds*..

### Friday, May 14

- Beginning of magnetometer study and shovel testing survey

**Reading:** Hestor, Shafer, and Feder. Pages 53-59, from *Field Methods in Site Survey* up to, but not including *Chemical Survey*.

Familiarize yourself with the Panamerican *Health and Safety for Archaeologists and CRM Professionals* Manual.

## WEEK TWO (May 17-21)

### Monday, May 17

- Magnetometer study and shovel test survey continues
- Introduction of weekly assignment: *Basic orienteering, field survey and site recording*. Students will learn how to use map and compass, plan transect and judgmental shovel tests, and complete a Florida Master Site File site form.

**Reading:** Milanich 2002, Chapter 16 in Anderson and Mainfort 2002. *The Woodland Southeast*.

**Tuesday, May 18**

- Shovel test survey continues
- LECTURE: REMOTE SENSING TECHNIQUES IN ARCHAEOLOGY (Matt Keith)

**Reading:** Hester, Shafer, and Feder. 59-63 *Remote Sensing: Instrument Anomaly Survey*.

**Wednesday, May 19**

- Shovel test survey continues

**Thursday, May 20**

- Shovel test survey continues
- Begin field laboratory processing of artifacts
- Discussion of plans for Block Excavations

**Friday, May 21**

*Tour of local sites—Lake Jackson* (lecture by Amanda Evans), *Velda Mound* (lecture by Dr. Wheeler), & *Block Sterns* (lecture by Louis Tesar)

**Readings:** Jones, Penton, and Tesar. 1998. In Williams and Elliot, *A World Engraved*, Chapter 13.

**WEEK THREE (May 24-28)****Monday, May 24**

- Shovel test survey continues
- Field laboratory processing of artifacts continues
- Introduction of weekly assignment: *Public Archaeology*. Students will develop interpretive materials, plan and give public tours of the site.

**Reading:** Percy and Brose 1974.

**Tuesday, May 25**

- Shovel test survey completed
- Field laboratory processing of artifacts continues

**Wednesday, May 26**

- Begin Block Excavations

**Reading:** Hester, Shafer, and Feder, Chapter 7. *The Handling and Conservation of Artifacts in the Field*.

**Thursday, May 27**

- Block Excavation continues
- Field laboratory processing of artifacts continues

**Friday, May 28**

- Block Excavation continues
- Field laboratory processing of artifacts continues
- LECTURE: GUEST LECTURE ON SOIL SCIENCE APPLICATIONS IN ARCHAEOLOGY (lecture by Meredith Hardy)

**WEEK FOUR (May 31-June 4)**

**Monday, May 31** (Memorial Day holiday)

**Tuesday, June 1**

- Block Excavation continues
- Field laboratory processing of artifacts continues
- Introduction of weekly assignment: *Laboratory practical*. Students will prepare for a laboratory practical that will require identification of different artifact classes, materials, and artifact types.

**Reading:** Bense 1998. *Santa Rosa-Swift Creek in Northwestern Florida*.

**Wednesday, June 2**

- Block Excavation continues
- Field laboratory processing of artifacts continues
- LECTURE: ARCHAEOLOGICAL SURVEYING TECHNIQUES (includes hands-on project) (lecture by Jim Eberwine)

**Thursday, June 3**

- Block Excavation continues
- Field laboratory processing of artifacts continues

**Friday, June 4**

*Field visit to Kolomoki Mounds in Early County, Georgia*

**Reading:** Pluckhahn 2003. *Kolomki*, Chapters 1 and 2.

**WEEK FIVE (June 7-11)****Monday, June 7**

- Block Excavation continues
- Field laboratory processing of artifacts continues
- Introduction of weekly assignment: *Site stratification and stratigraphy*. Students will complete an exercise in interpreting site stratification.

**Tuesday, June 8**

- Block Excavation continues
- Field laboratory processing of artifacts continues

**Wednesday, June 9**

- Block Excavation continues
- Field laboratory processing of artifacts continues
- LECTURE: FIELD PHOTOGRAPHY (lecture Amanda Evans)

**Reading:** Hester, Shafer, and Feder, Chapter 8, Archaeological Field Photography.

**Thursday, June 10**

- Block Excavation continues
- Field laboratory processing of artifacts continues.

**Friday, June 11**

- Block Excavation continues
- Field laboratory processing of artifacts continues

**WEEK SIX (June 14-18)****Monday, June 14**

- Block Excavation continues
- Field laboratory processing of artifacts continues
- Final project due this week: *Interpretation and research*. Students will write a short paper comparing Letchworth Mounds to other sites visited during the field school and develop plans for future work at the site. Students should plan to use their fieldnotes, completed forms, and other data generated during the project.

**Tuesday, June 15**

- Block Excavation continues
- Field laboratory processing of artifacts continues

**Wednesday, June 16**

- Block Excavation continues
- Field laboratory processing of artifacts continues

**Thursday, June 17**

- Block Excavation continues
- Field laboratory processing of artifacts continues
- Begin back-filling

**Friday, June 18**

- Block Excavation completed
- Complete back-filling
- Field laboratory processing of artifacts completed

## READING LIST

Bense, Judith A.

1998 Santa Rosa-Swift Creek in Northwestern Florida. In *A World Engraved: Archaeology of the Swift Creek Culture*, edited by Mark Williams and Daniel T. Elliott, pp. 247-273. University of Alabama Press, Tuscaloosa.

Panamerican Environmental, Inc.

1999 Health and Safety for Archaeologists and CRM Professionals.

Hester, Thomas R., Harry J. Shafer, and Kenneth L. Feder

1997 *Field Methods in Archaeology*. Mayfield Publishing Company, Mountain View, California.

Jones, Calvin B., Daniel L. Penton, and Louis D. Tesar

1998 1973 and 1994 Excavations at the Block-Sterns Site, Leon County, Florida. In *A World Engraved: Archaeology of the Swift Creek Culture*, edited by Mark Williams and Daniel T. Elliott, pp. 223-246. University of Alabama Press, Tuscaloosa.

Milanich, Jerald T.

2002 Weeden Island Cultures. In *The Woodland Southeast*, edited by David G. Anderson and Robert C. Mainfort, Jr., pp. 352-372. University of Alabama Press, Tuscaloosa.

Milanich, Jerald T., Ann S. Cordell, Vernon J. Knight, Jr., Timothy A Kohler, Brenda J. Sigler-Lavelle

1997 *Archaeology of Northern Florida A.D. 200-900: The McKeithen Weeden Island Culture*. University Press of Florida, Gainesville.

Percy, George W., and David S. Brose

1974 Weeden Island Ecology, Subsistence, and Village Life in Northwest Florida. Paper presented at annual meeting of the Society for American Archaeology, Washington, D.C.

Pluckhahn, Thomas J.

2003 *Kolomoki: Settlement, Ceremony, and Status in the Deep South, A.D. 350 to 750*. University of Alabama Press, Tuscaloosa.

Tesar, Louis D., Brenda N. Swann, James J. Miller, Melanie Damour-Horrell, and Michael Lavender

2003 Results of the Letchworth Mounds (8JE337) Archaeological State Park Auger and Topographic Survey with Management Recommendations. Bureau of Archaeological Research, Florida Division of Historical Resources, Tallahassee.